



# Situation Report on COVID-19 and Dengue

01 Jan – 02 Nov 2025

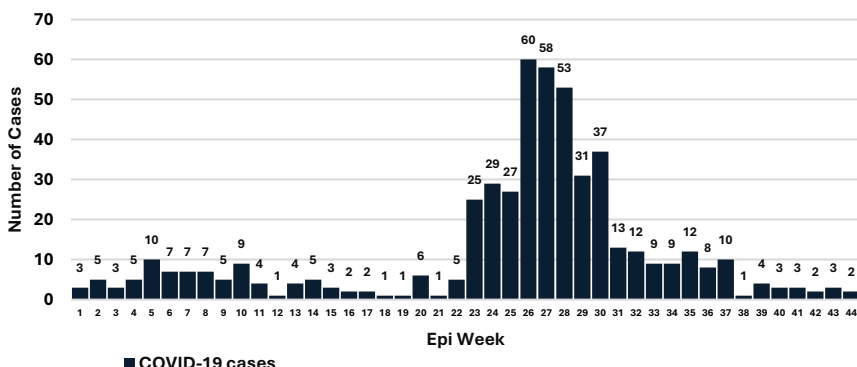
## COVID-19

Cumulative Case	Cases in Last 7 days	Cases in Last 24 hours
<b>507</b>	<b>3</b>	<b>2</b>
Verified Deaths	No. of districts with cases reported	
<b>3</b>	<b>51</b>	

## Dengue

Cumulative Case	Cases in last 7 days	Cases in last 24 hours
<b>7075</b>	<b>174</b>	<b>24</b>
Verified Deaths	No. of districts with cases reported	
<b>6</b>	<b>75</b>	

Distribution of COVID-19 cases by Epiweek, 2025



Province wise distribution of COVID-19 cases

Province	Last 7 days	Cumulative total case
Koshi	0	51
Madhesh	0	19
Bagmati	3	341
Gandaki	0	31
Lumbini	0	31
Karnali	0	10
Sudurpashchim	0	24

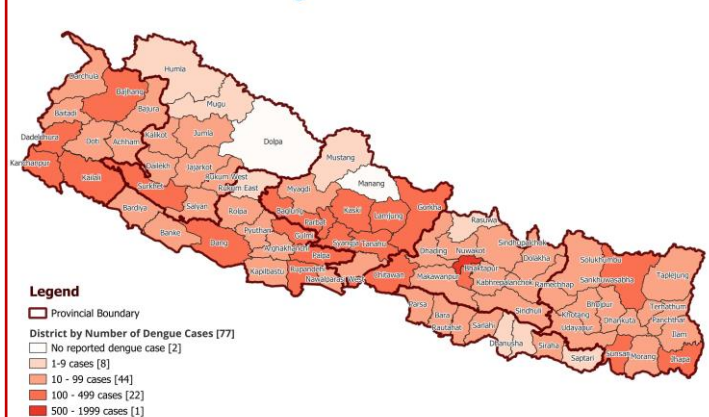
Monthly Trend of Dengue Cases



Province wise distribution of Dengue cases

Province	Last 7 days	Cumulative total case
Koshi	7	933
Madhesh	3	147
Bagmati	31	1763
Gandaki	90	1775
Lumbini	5	1169
Karnali	20	500
Sudurpashchim	18	788

Districtwise Dengue Case Distribution in 2025



### कोरोना भाइरस रोगबाट बच्ने उपायहरू

आरो आएका, रोगी लक्षणमा वा स्वास्थ्य फेरी नगरे भएमा नजिकको तोकिएको स्वास्थ्य चौकमा सम्पर्क गर्नु

कोरोना भाइरस रोगबाट बच्न आरोग्यकर्मीको सल्लाह पुर्याउनु

### डेङ्गीका मुख्य लक्षणहरू

डेङ्गीका मुख्य लक्षणहरू देखिएमा के गर्ने ?

रोगीलाई फुल पार्ने स्वस्थो संरक्षित घर भित्र र घरपरामर्श पाली जसको लागु र पानी राख्ने भाइरस स्रोत स्रोतबाट सफा गरी र लागुस्रोतको फुल सफा गरी ।

# DISTRICT AND MONTH WISE DISTRIBUTION OF DENGUE CASES (2025)

SN	PROVINCE	DISTRICT	JAN	FEB	MAR	APR	MAY	JUN	JUL	AUG	SEP	OCT	NOV	DEC	TOTAL
1	KOSHI PROVINCE	TAPLEJUNG	1	0	1	0	0	2	3	3	1	2	0	0	13
2	KOSHI PROVINCE	SANKHUWASABHA	0	0	8	6	10	17	17	31	38	13	0	0	140
3	KOSHI PROVINCE	SOLUKHUMBU	0	0	0	0	1	0	0	2	0	7	0	0	10
4	KOSHI PROVINCE	OKHALDHUNGA	2	5	5	0	5	3	14	12	27	15	0	0	88
5	KOSHI PROVINCE	KHOTANG	0	2	0	0	0	6	16	18	7	35	0	0	84
6	KOSHI PROVINCE	BHOJPUR	4	1	1	3	1	3	13	20	10	7	0	0	63
7	KOSHI PROVINCE	DHANKUTA	1	2	0	0	1	0	7	22	5	6	0	0	44
8	KOSHI PROVINCE	TERHATHUM	1	1	0	0	1	1	1	6	1	1	0	0	13
9	KOSHI PROVINCE	PANCHTHAR	1	5	4	1	0	3	8	13	5	5	0	0	45
10	KOSHI PROVINCE	ILAM	1	0	0	0	0	2	2	2	2	2	0	0	11
11	KOSHI PROVINCE	JHAPA	24	11	12	10	13	16	18	18	19	21	0	0	162
12	KOSHI PROVINCE	MORANG	12	3	6	6	1	1	2	12	7	5	0	0	55
13	KOSHI PROVINCE	SUNSARI	11	14	19	20	22	19	21	24	18	18	0	0	186
14	KOSHI PROVINCE	UDAYAPUR	1	1	2	0	0	2	0	3	4	6	0	0	19
TOTAL (KOSHI)			59	45	58	46	55	75	122	186	144	143	0	0	933
15	MADHESH PROVINCE	SAPTARI	0	0	0	1	1	0	0	1	1	2	0	0	6
16	MADHESH PROVINCE	SIRAHA	0	1	0	0	0	0	0	6	5	1	0	0	13
17	MADHESH PROVINCE	DHANUSA	0	0	0	0	1	0	1	0	2	1	0	0	5
18	MADHESH PROVINCE	MAHOTTARI	0	0	0	0	0	1	0	1	3	2	0	0	7
19	MADHESH PROVINCE	SARLAHI	0	1	2	0	0	4	2	9	6	5	0	0	29
20	MADHESH PROVINCE	RAUTAHAT	0	0	0	0	1	1	4	5	9	4	0	0	24
21	MADHESH PROVINCE	BARA	3	2	0	0	1	8	2	2	14	6	0	0	38
22	MADHESH PROVINCE	PARSA	2	0	1	0	0	1	4	7	3	7	0	0	25
TOTAL (MADHESH)			5	4	3	1	4	15	13	31	43	28	0	0	147
23	BAGMATI PROVINCE	DOLAKHA	1	0	0	0	1	0	3	11	31	11	0	0	58
24	BAGMATI PROVINCE	SINDHUPALCHOK	0	5	0	1	3	2	2	6	12	10	0	0	41
25	BAGMATI PROVINCE	RASUWA	0	0	0	0	0	0	2	2	3	2	0	0	9
26	BAGMATI PROVINCE	DHADING	1	2	2	1	4	2	3	16	32	25	0	0	88
27	BAGMATI PROVINCE	NUWAKOT	12	2	2	6	2	0	11	21	14	24	0	0	94
28	BAGMATI PROVINCE	KATHMANDU	27	28	29	17	26	56	66	116	218	290	0	0	873
29	BAGMATI PROVINCE	BHAKTAPUR	9	3	9	5	3	2	4	9	17	49	0	0	110
30	BAGMATI PROVINCE	LALITPUR	3	8	3	1	5	3	11	21	36	49	0	0	140
31	BAGMATI PROVINCE	KAVREPALANCHOK	5	6	0	4	2	4	4	11	15	15	0	0	66
32	BAGMATI PROVINCE	RAMECHHAP	0	1	2	4	5	2	5	8	10	9	0	0	46
33	BAGMATI PROVINCE	SINDHULI	1	0	1	1	1	2	5	3	19	16	0	0	49
34	BAGMATI PROVINCE	MAKWANPUR	4	3	5	2	0	3	7	6	12	4	0	0	46
35	BAGMATI PROVINCE	CHITAWAN	12	15	14	7	13	7	10	23	21	21	0	0	143
TOTAL (BAGMATI)			75	73	67	49	65	83	133	253	440	525	0	0	1763
36	GANDAKI PROVINCE	GORKHA	7	12	3	3	6	17	21	29	27	32	0	0	157
37	GANDAKI PROVINCE	MANANG	0	0	0	0	0	0	0	0	0	0	0	0	0
38	GANDAKI PROVINCE	MUSTANG	0	2	0	0	1	0	2	1	1	2	0	0	9
39	GANDAKI PROVINCE	MYAGDI	4	0	0	1	1	3	9	6	15	15	0	0	54
40	GANDAKI PROVINCE	KASKI	32	16	8	19	31	71	136	55	62	34	0	0	464
41	GANDAKI PROVINCE	LAMJUNG	1	6	0	1	4	51	25	30	52	44	0	0	214
42	GANDAKI PROVINCE	TANAHU	3	2	5	12	23	39	63	49	48	31	0	0	275
43	GANDAKI PROVINCE	NAWALPARASI EAST	7	3	1	0	2	4	3	5	5	12	0	0	42
44	GANDAKI PROVINCE	SYANGJA	1	2	7	2	8	13	26	33	30	25	0	0	147
45	GANDAKI PROVINCE	PARBAT	3	5	5	2	0	6	22	8	18	31	0	0	100
46	GANDAKI PROVINCE	BAGLUNG	2	3	3	4	6	16	29	20	50	180	0	0	313
TOTAL (GANDAKI)			60	51	32	44	82	220	336	236	308	406	0	0	1775
47	LUMBINI PROVINCE	RUKUM EAST	0	0	0	1	0	2	0	1	5	0	0	0	9
48	LUMBINI PROVINCE	ROLPA	3	0	0	1	0	2	2	5	5	1	0	0	19
49	LUMBINI PROVINCE	PYUTHAN	0	0	0	0	1	2	7	5	10	1	0	0	26
50	LUMBINI PROVINCE	GULMI	0	0	4	2	9	12	13	36	19	16	0	0	111
51	LUMBINI PROVINCE	ARGHAKHANCHI	1	4	1	1	2	4	6	26	10	9	0	0	64
52	LUMBINI PROVINCE	PALPA	2	6	7	11	23	32	56	99	52	30	0	0	318
53	LUMBINI PROVINCE	NAWALPARASI WEST	0	0	2	0	1	2	3	6	25	21	0	0	60
54	LUMBINI PROVINCE	RUPANDEHI	5	10	19	9	4	14	13	29	36	27	0	0	166
55	LUMBINI PROVINCE	KAPILBASTU	1	3	2	0	1	1	1	8	5	5	0	0	27
56	LUMBINI PROVINCE	DANG	4	1	10	3	14	15	17	39	48	92	0	0	243
57	LUMBINI PROVINCE	BANKE	3	6	3	0	5	7	8	9	14	15	0	0	70
58	LUMBINI PROVINCE	BARDIYA	2	1	0	1	3	3	3	6	28	9	0	0	56
TOTAL (LUMBINI)			21	31	48	29	63	96	129	269	257	226	0	0	1169
59	KARNALI PROVINCE	DOLPA	0	0	0	0	0	0	0	0	0	0	0	0	0
60	KARNALI PROVINCE	MUGU	0	0	1	1	1	0	0	1	0	1	0	0	5
61	KARNALI PROVINCE	HUMLA	0	0	0	0	0	0	0	0	1	0	0	0	1
62	KARNALI PROVINCE	JUMLA	0	1	0	0	1	0	1	3	2	7	0	0	15
63	KARNALI PROVINCE	KALIKOT	3	0	1	0	0	1	1	5	2	5	0	0	18
64	KARNALI PROVINCE	DAILEKH	1	0	1	0	1	1	4	14	32	22	0	0	76
65	KARNALI PROVINCE	JAJARKOT	0	1	0	0	0	0	0	3	5	2	0	0	11
66	KARNALI PROVINCE	RUKUM WEST	2	3	2	0	0	0	0	2	6	7	0	0	22
67	KARNALI PROVINCE	SALYAN	0	4	0	0	0	1	4	1	6	7	0	0	23
68	KARNALI PROVINCE	SURKHET	6	9	0	4	3	0	2	5	53	136	126	0	329
TOTAL (KARNALI)			6	9	9	4	3	5	15	82	190	177	0	0	500
69	SUDUR PASHCHIM PROVINCE	BAJURA	4	2	3	3	4	5	6	5	1	3	0	0	36
70	SUDUR PASHCHIM PROVINCE	BAJHANG	1	1	5	6	3	3	9	23	35	16	0	0	102
71	SUDUR PASHCHIM PROVINCE	DARCHULA	0	1	0	1	2	0	3	6	18	5	0	0	36
72	SUDUR PASHCHIM PROVINCE	BAITADI	2	1	0	3	2	9	10	11	28	7	0	0	73
73	SUDUR PASHCHIM PROVINCE	DADELDHURA	3	1	1	7	11	9	20	35	63	7	0	0	157
74	SUDUR PASHCHIM PROVINCE	DOTI	14	11	5	1	0	1	5	2	2	5	0	0	46
75	SUDUR PASHCHIM PROVINCE	ACHHAM	0	6	6	7	2	4	8	12	14	17	0	0	76
76	SUDUR PASHCHIM PROVINCE	KAILALI	4	10	6	9	11	3	13	24	20	31	0	0	131
77	SUDUR PASHCHIM PROVINCE	KANCHANPUR	5	6	11	9	7	2	8	15	20	48	0	0	131
TOTAL (SUDURPASHCHIM)			33	39	37	46	42	36	82	133	201	139	0	0	788
TOTAL (NEPAL)			259	252	254	219	314	530	830	1190	1583	1644	0	0	7075